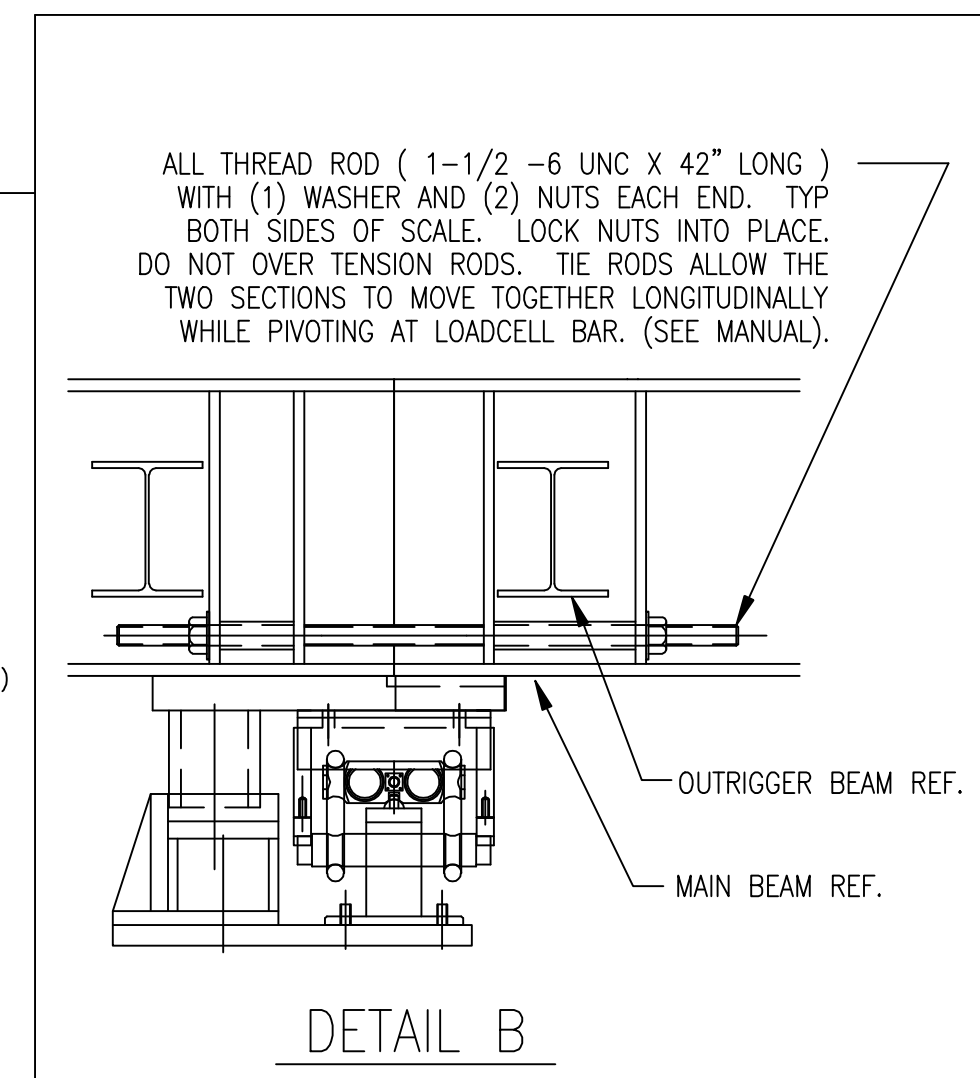
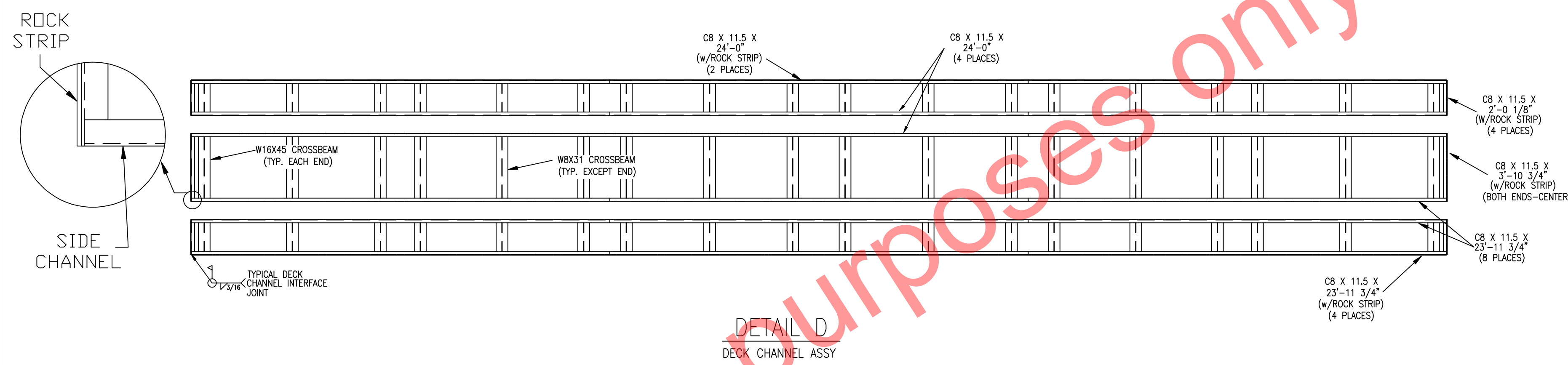


RAIL SCALE LOADCELL AND CHECK LAYOUT

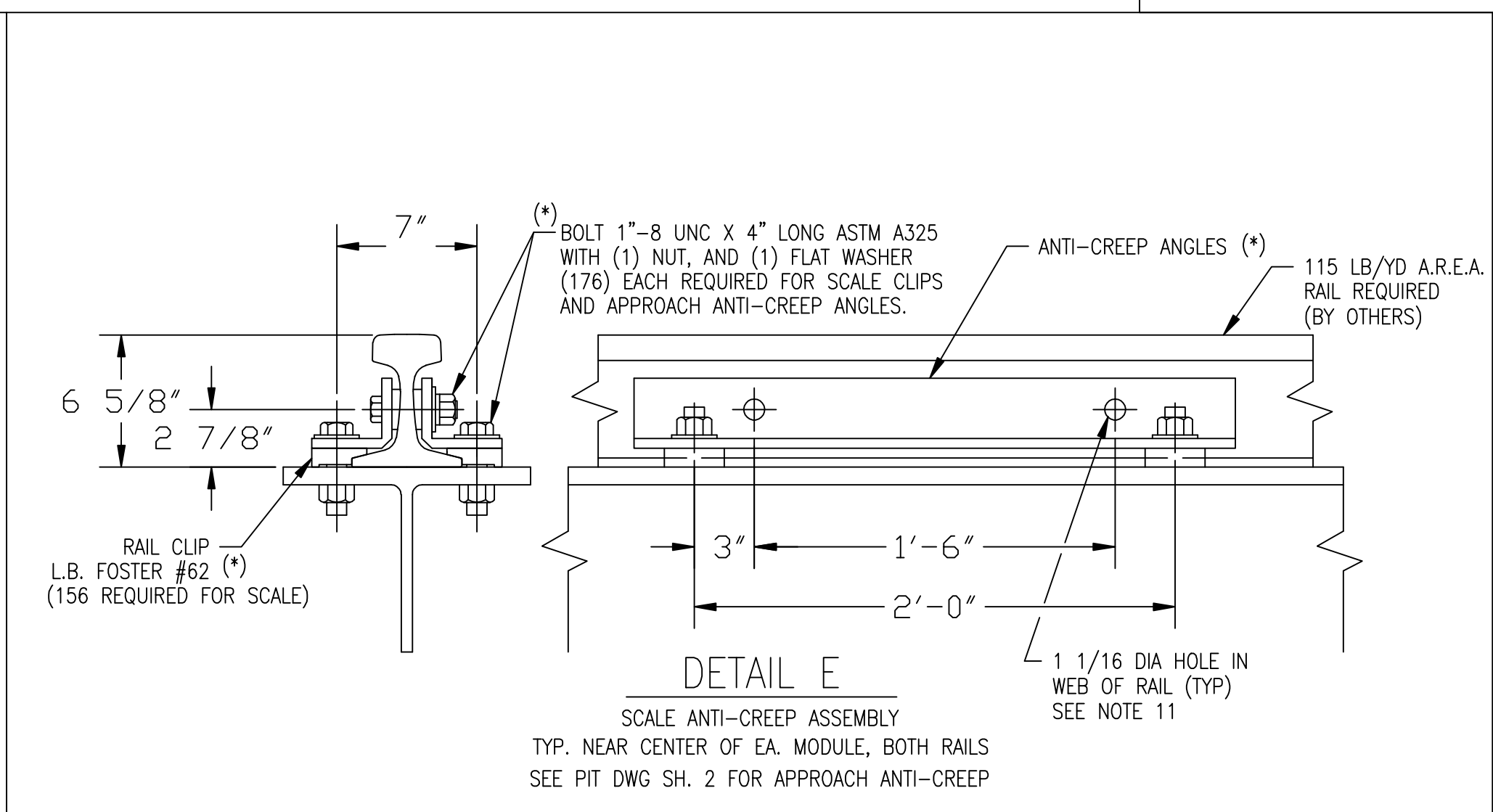
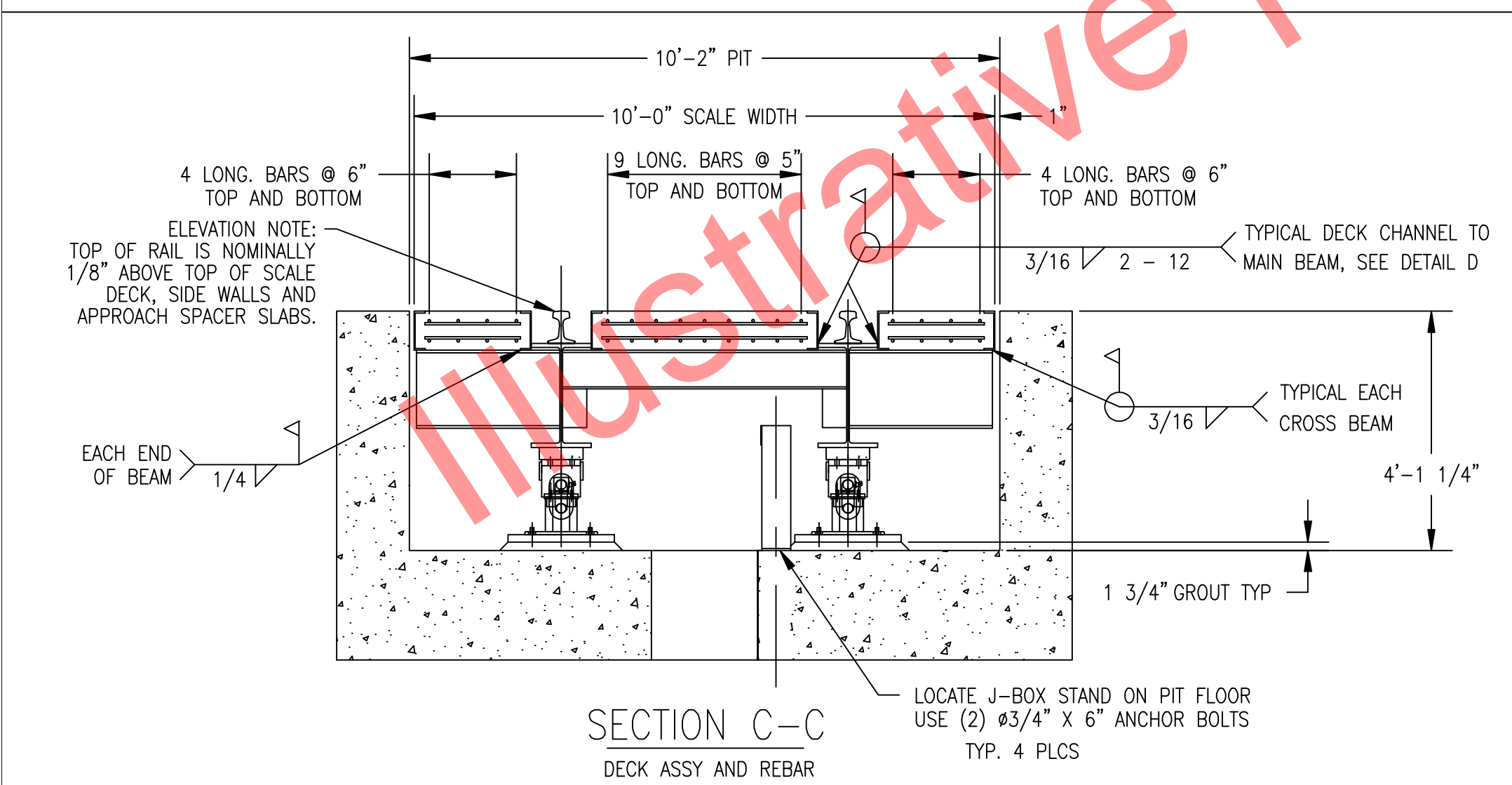
MAINTAIN CLEARANCES AS SHOWN (SEE DETAIL B)

NOTES:

- ASSEMBLY: THE SCALE IS TO BE ASSEMBLED ON LOCATING TOOLS WORKING TO THE PIT CENTER. BOLTS AND NUTS SHALL BE TIGHTENED 1/2 TURN PAST SNUG TIGHT ("SNUG TIGHT" BEING DEFINED AS THE TIGHTNESS OBTAINED BY A FEW IMPACTS OF AN IMPACT WRENCH, OR THE FULL FORCE OF A MAN USING AN ORDINARY SPUD WRENCH). ALL HARDWARE TO BE COATED WITH NEVER-SEEZ AT ASSEMBLY.
- LOADCELLS: REF. LOADCELL CALIBRATION SHEETS FOR LOADCELL SPECIFICATIONS AND WIRE COLOR CODES. ALSO REF. DWG 10004940A WIRING DIAGRAM.
- DECK CHANNELS (SEE DETAIL 'D'): THE DECK CHANNELS SERVE BOTH AS A COPING AND AS A FORM FOR THE DECK. SECURE AND SPACE THE CHANNELS FROM THE PIT COPING BY TACK WELDING SPACERS BETWEEN THE PIT COPING AND THE DECK CHANNELS. WELD THE DECK CHANNELS TO THE GIRDERS. SEE SECTION 'C-C' AND DETAIL 'D'. PLACE CORRUGATED DECKING (20 GA.) ON TOP OF THE BEAMS. PLACE REINFORCING BARS AND MANHOLES (OPTIONAL) IN POSITION IN ACCORDANCE WITH THE DRAWING. USE 4000 PSI CONCRETE AT 28 DAY AGE. USE 5-7% AIR ENTRAINMENT. REINFORCING STEEL AND CONCRETE SHALL BE PLACED ACCORDING TO A.C.I. CODE AND A.R.E.A. CH. 8. BURN OFF THE SPACER WELDS AND REMOVE SHORING AFTER THE DECK HAS CURED. SEE NOTE 11.
- EPOXY GROUTING: SCALE GROUT PLATES MUST BE EPOXY GROUTED IN PLACE AFTER WEIGHBRIDGES, LOADCELLS, CHECK BRACKETS AND APPROACH RAILS ARE IN CORRECT WEIGHING POSITION. USE A NON-SHRINK EPOXY TYPE GROUT TO DEVELOP 10,000 PSI COMPRESSIVE STRENGTH. FOLLOW THE GROUT MANUFACTURER INSTRUCTIONS FOR SURFACE PREPARATION, FORMS, MIXING AND PLACEMENT PROCEDURES.
- WEIGHBRIDGE CLEARANCE: MINIMUM 1" CLEARANCE BETWEEN PIT CURB ANGLES AND WEIGHBRIDGE MUST BE HELD.
- APPROACHES: 75 FEET OF STRAIGHT TRACK AT EACH APPROACH TO WEIGHRAILS SHALL BE PROVIDED. MINIMUM 25 FEET OF CONCRETE IN THE SAME PLANE IS REQUIRED. SEE PIT AND APPROACH DRAWINGS FOR APPROACH SPECIFICATIONS.
- LOAD RATING: MEET A.A.R./A.R.E.A. COOPER E-80 REQUIREMENTS AND NIST HB44 FOR CLASS III DEVICES. SCALE SECTIONAL CAPACITY TO BE 170,000 LBS.
- WIRING: REF. DRAWING 10004940A FOR WIRING DIAGRAM (OR SEE INSTALLATION MANUAL.) MOUNT J-BOXES ON J-BOX STANDS AS SHOWN. CONDUIT (BY OTHERS) IS RECOMMENDED FOR CABLE ROUTING (MAY BE SECURED TO SCALE OR PIT WALLS).
- CHECK BUMPER ADJUSTMENT (SEE DETAIL): ADJUSTMENT TO BE MADE AT MEAN TEMPERATURE. ALLOW 1/8" OR 3/16" LONGITUDINAL CLEARANCE AND 1/16" LATERAL CLEARANCE BETWEEN PIPE AND CHECK BRACKET.
- (*): ITEMS MARKED WITH * ARE REQUIRED BUT NOT INCLUDED WITH SCALE. ITEMS ARE STANDARD HARDWARE AVAILABLE LOCALLY OR FURNISHED BY THURMAN AT AN ADDITIONAL COST. DECKING, SHORING AND CONCRETE IS BY OTHERS.
- TO ASSURE PROPER FIT, SCALE LIVE RAILS MUST BE DRILLED FOR ANTI-CREEP DEVICES IN THE FIELD. AFTER THE RAIL IS LOCATED IN PLACE, USE THE ANTI-CREEP DEVICE AS A TEMPLATE TO LOCATE THE HOLES THROUGH THE RAIL WEB. IF THESE HOLES ARE BEING DRILLED AFTER THE SCALE DECK CHANNEL IS IN PLACE, THEN THE RAIL MUST BE MARKED, LIFTED OUT AND DRILLED.



PIT REINFORCING STEEL SCHEDULE		A.S.T.M. A-615 GRADE 60			
SYM	SIZE	QTY	LOCATION	LENGTH	WEIGHT
ST1	#4	126	CENTER SECT. TRANSVERSE	3'- 9"	316
ST2	#4	252	SIDE SECTION TRANSVERSE	1'- 9"	295
ST3	#5	54	CENTER SECT. LONG.	23'- 9"	1338
ST4	#5	48	SIDE SECTION LONG.	23'- 9"	1189
					TOTAL WEIGHT 3138



SUMMARY OF DECK QUANTITIES	
CONCRETE	16 CU. YDS.
REINFORCEMENT STEEL	3,138 LBS

8710 ASSEMBLY (PIT W/O PIERS)

THIS DRAWING IS SUPPLIED AS CHECKED BELOW:

REFERENCE (ESTIMATES ONLY, NOT FOR CONSTRUCTION)

CERTIFIED FOR CONSTRUCTION, THURMAN

CUSTOMER: _____ DATE: _____

CUSTOMER APPROVAL, RETURN ONE COPY. (ORDER ON HOLD UNTIL SIGNED COPY IS RETURNED)

APPROVED AS DRAWN, APPROVED BY: _____ DATE: _____

APPROVED AS NOTED, APPROVED BY: _____ DATE: _____

TOLERANCES UNLESS OTHERWISE SPECIFIED: ± 1/8"

DIMENSIONS ARE IN INCHES UNLESS OTHERWISE SPECIFIED

THURMAN
255 E. LIVINGSTON AVE.
COLUMBUS, OHIO 43215
PH: 614-221-9877
FAX: 614-221-8878

DATE: 03/30/09
DRAWN BY: LDC

THIS DRAWING IS THE PROPERTY OF THURMAN SCALE COMPANY AND IS LOANED TO THE RECIPIENT FOR HIS/HER CONFIDENTIAL USE ONLY. IN CONSIDERATION OF THE LOAN OF THIS DRAWING, THE RECIPIENT PROMISES AND AGREES THAT IT SHALL NOT BE USED IN ANY WAY DETRIMENTAL TO THE INTEREST OF THURMAN SCALE COMPANY, THAT IT SHALL BE RETURNED UPON REQUEST, AND THAT IT SHALL NOT BE REPRODUCED, COPIED, LOANED OR OTHERWISE DISPOSED OF, DIRECTLY OR INDIRECTLY WITHOUT THE EXPRESS WRITTEN CONSENT OF THURMAN SCALE COMPANY.

TITLE: 8710 COMBO TRUCK/RR SCALE
72'X10' ASSY. DETAILS 115#/YD A.R.E.A. RAIL

DRAWING NUMBER: 92178-DP4
SHEET 3 OF 3